

Weyn-Lauwers N.V.

Industriepark-Noord 12
B - 9100 SINT-NIKLAAS

Tel. : 00 32 (0)3 776.34.13
Fax : 00 32 (0)3 778.09.52
weynlauwers@weynlauwers.be
www.weynlauwers.be

**BALL VALVE
SW - FULL BORE
3-pc carbon steel
FIG 168SW**

DESIGN FEATURES

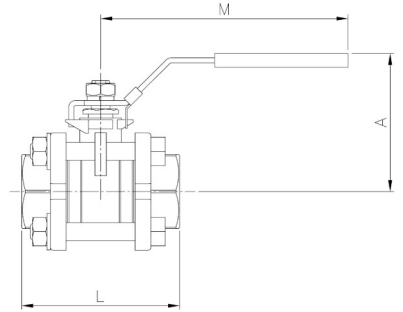
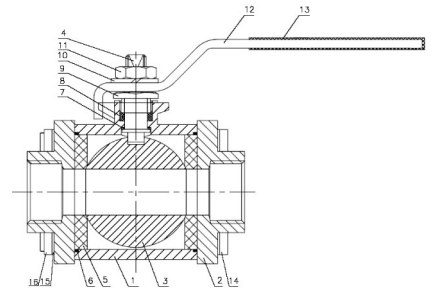
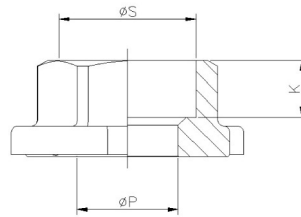
- 3-PC ball valve 1/4"-4"
- socket weld ends according to ANSI B 16.11
- min. temp : -25°C
- max. temp : +180°C
- specifications : anti-blow out stem
Locking device
Full bore
- max. working pressure 1000 WOG



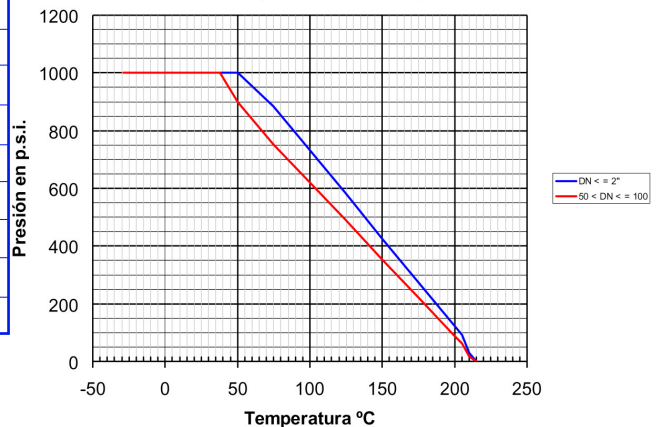
USE

- for all common fluids

MATERIALS



item	Part name	Material
1	body	ASTM A216 WCB
2	ends	ASTM A216 WCB
3	ball	SS 316
4	stem	SS 316
5	seat	PTFE filled with 15 % glass
6	gasket	PTFE
7	thrust washer	PTFE
8	stem packing	PTFE
9	gland	SS 304
10	spring washer	SS 304
11	nut	SS 304
12	handle	SS 304
13	handle sleeve	plastic
14	bolt	SS 304
15	spring washer	SS 304
16	nut	SS 304



SIZE (in mm)

DN	1/4"	3/8"	1/2"	3/4"	1"	1 1/4"	1 1/2"	2"	2 1/2"	3"	4"
bore	11,6	11,6	15	20	25	32	40	50	65	80	100
L	50	50	61	70	80	93	102	124	156	179	218
A	48	48	50	60	64	79	85	87	117	125	173
M	100	100	103	127	127	154	154	192	244	244	330
P	11,6	11,6	15	20	25	32	40	50	65	80	100
K	10	10	10	14	14	15	15	19	21	24	35
dia. S	14,1	17,6	21,7	27,1	33,8	42,6	48,7	61,1	73,8	89,8	115,5
Kv m ³ /h	6	10	24	43	83	130	205	340	520	1100	1820
WOG	1000	1000	1000	1000	1000	1000	1000	1000	1000	1000	1000
kg	0,29	0,29	0,39	0,61	0,86	1,37	2,04	3,74	6,44	10,2	20,5
ref.	168SW02	168SW03	168SW04	168SW05	168SW06	168SW07	168SW08	168SW09	168SW10	168SW11	168SW12