



Weyn-Lauwers N.V.

INDUSTRIEPARK-NOORD 12
B - 9100 SINT-NIKLAAS

TEL. 0032 (0)3 776.34.13
FAX. 0032 (0)3 778.09.52

weynlauwers@weynlauwers.be
www.weynlauwers.be

SWITCH BOX BE41 2 ELECTRO-MECHANICAL SWITCHES

INSTALLATION & OPERATION INSTRUCTIONS

CAUTION - PLEASE READ CAREFULLY:

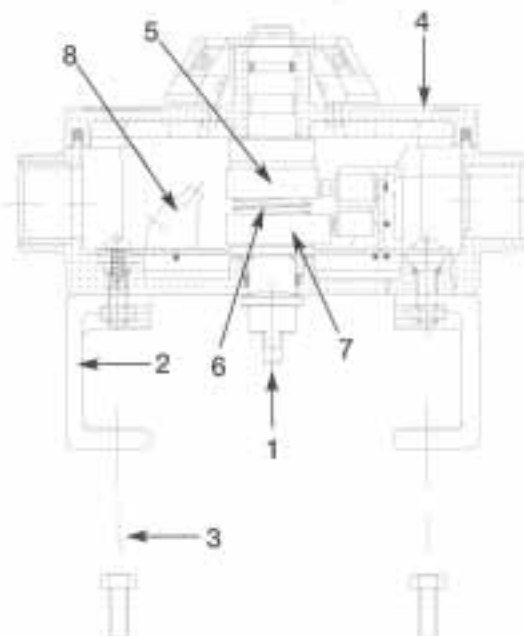
- The appropriate switches are those provided by the manufacturer
- Before removing the cover and proceeding with any operations, it is essential that the SWITCH BOX IS NOT ENERGIZED.
- The conduit caps supplied with the switch box are for transit purpose only and do not guarantee the IP65 protection. Therefore, it's necessary to replace them with connectors suitable for the required protection rating.

1. INSTALLATION.

- a. Align the SB shaft (ref. 1) to the actuator pinion and engage with it.
- b. Using the provided screws (ref. 3) and washers, tighten the brackets (ref. 2) to the actuator.

2. SWITCH ADJUSTMENT.

- a. Remove the four screws and remove the cover (ref. 4).
- b. Turn the actuator until to the open position.
- c. Push the upper cam down (ref. 5) – cam open – turn until the switch is activated and then release; the spring between the 2 cams (ref. 6) will ensure the cam re-engagement onto the shaft. (Note: on the shaft there is a spline and each line adjusts 2°).
- d. Turn the actuator until to the closed position.
- e. Pull the lower cam up (ref. 7) – cam closed – turn until the switch is activated and then release; the spring between the 2 cams (ref. 6) will ensure the cam re-engagement onto the shaft. (Note: on the shaft there is a spline and each line adjusts 2°).
- f. Reassemble the cover (ref. 4) and tighten the screws.

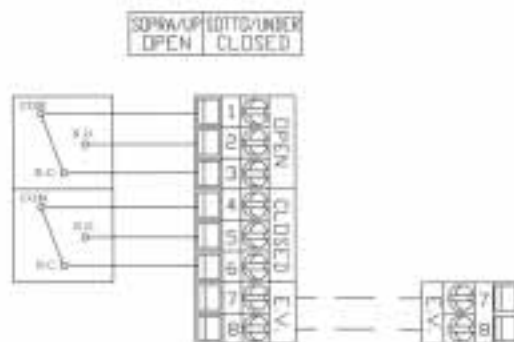


3. ELECTRICAL WIRING.

- a. Remove the cover (ref. 4).
- b. Remove the protection cap(s) and substitute it(them) with the plug(s) that ensures the desired protection, inserting a wrench onto the flats of each conduit and then tighten. **Be careful that the thread of the connector does not protrude inside the box.**
- c. Conduits are threaded M20x1,5

WARNING: the IP65 protection depends also on the wiring, so the use of inadequate and/or not properly installed components downgrades the switch box.

Using a screw driver, wire the eight points terminal strips (ref. 8) according to the diagram.
Reassemble the cover (ref. 4) and tighten the four screws.



ATTENTION: the Switch Box is constructed of techno-polymer (fire-proof material, certificate UL94V0) and has been approved as double insulated, therefore, it is not necessary for the SB to be grounded. However, if a connector is used, this must be made of insulating material.

ORDER REF. : 205888