

**Weyn-Lauwers** N.V.

Industriepark-Noord 12  
B - 9100 SINT-NIKLAAS

Tel. : 00 32 (0)3 776.34.13  
Fax : 00 32 (0)3 778.09.52  
weynlauwers@weynlauwers.be  
www.weynlauwers.be

**ELECTIC ACTUATOR  
NA / NA-X**

## **ELECTRIC ACTUATOR TYPE NA / NA-X**

### **GENERAL DESCRIPTION**

The electric actuators type NA are dedicated to the actuation of ¼ de turn valves like ball and butterfly valves having a maximum torque value between 60 Nm. With a compact design, a die cast aluminium housing and an IP67 the NA actuator is especially adapted to the actuation of industrial valves with heavy duty factor and dusty outdoor and indoor area.

NAX : ATEX version EEx d II B T4 for hazardous areas.

### **MECHANICAL SPECIFICATIONS**

- Gear pinions in carbon steel
- Manual operating device with declutchable handwheel
- Position indicator
- Mounting pad for valve assembly according to ISO 5211
- Star bushing
- Four adjustable limit switches
- Mechanical torque limiter ( excepted for NA06 and NA09)

### **ELECTRICAL SPECIFICATIONS**

- Thermal protection of the electric actuator
- Wire connection with 2 packing gland M20 x 1.5 (non foumi)
- 2 adjustable limit switches
- 2 free auxillary switches 250V 16A
- Anti-condensation heating resistor 2W / TS . 20°C / +70°C

### **DUTY SERVICE**

Duty rating (according to IEC 34) : S2, 70% of time.

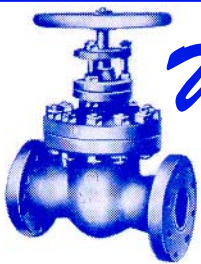
### **LIMITS OF USE**

- Ambiente temperature : - 20°C / +70°C
- Weatherproof rating : IP 67

### **CONSTRUCTION MATERIALS**

|         |                        |
|---------|------------------------|
| Housing | Epoxy coated aluminium |
| Cover   | Epoxy coated aluminium |
| Gear    | Steel                  |
| Stem    | Steel                  |





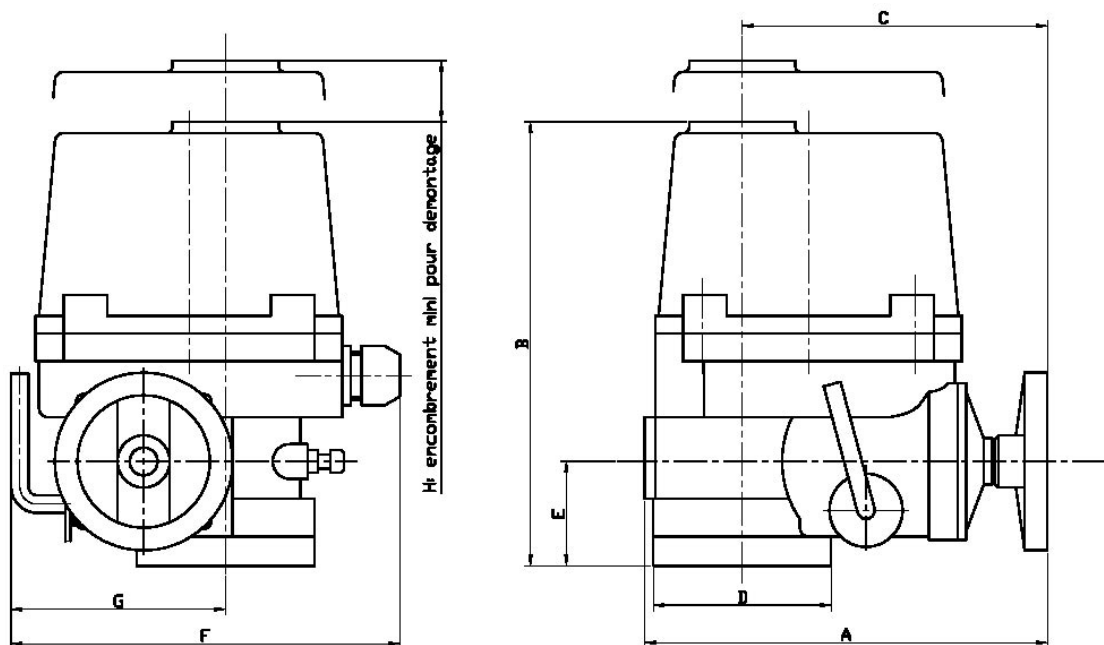
**Weyn-Lauwers** N.V.

Industriepark-Noord 12  
B - 9100 SINT-NIKLAAS

Tel. : 00 32 (0)3 776.34.13  
Fax : 00 32 (0)3 778.09.52  
weynlauwers@weynlauwers.be  
www.weynlauwers.be

**ELECTIC ACTUATOR  
NA / NA-X**

## ELECTRIC ACTUATOR TYPE NA / NA-X



| Dimensions (mm) | A   | B   | C   | D   | E  | F   | G   | H   |
|-----------------|-----|-----|-----|-----|----|-----|-----|-----|
| NA/NAX 06/09    | 231 | 255 | 175 | 102 | 60 | 223 | 113 | 108 |
| NA/NAX 15/19    | 261 | 255 | 184 | 120 | 60 | 266 | 139 | 108 |
| NA/NAX 28/50    | 285 | 302 | 202 | 145 | 70 | 300 | 159 | 130 |
| NA/NAX 60/100   | 325 | 343 | 226 | 175 | 78 | 349 | 191 | 178 |

### DIMENSIONS

### OTHERS SPECIFICATIONS

| Actuator | Torque (Nm) | Voltage  | Operating time (s) | Power (W) | ISO     | Star (mm) |
|----------|-------------|----------|--------------------|-----------|---------|-----------|
| NA06     | 60          | 230 V ca | 17                 | 15        | F07     | 17        |
| NA09     | 90          | 230 V ca | 17                 | 25        | F07/F10 | 17        |
| NA15     | 150         | 230 V ca | 20                 | 40        | F07/F10 | 17        |
| NA19     | 190         | 230 V ca | 20                 | 40        | F07/F10 | 17        |
| NA28     | 280         | 230 V ca | 24                 | 40        | F10/F12 | 22        |
| NA38     | 380         | 230 V ca | 24                 | 60        | F10/F12 | 27        |
| NA50     | 500         | 230 V ca | 24                 | 90        | F12/F14 | 27        |
| NA60     | 600         | 230 V ca | 29                 | 90        | F12/F14 | 27        |
| NA80     | 800         | 230 V ca | 29                 | 180       | F12/F14 | 27        |
| NA100    | 1000        | 230 V ca | 29                 | 180       | F12/F14 | 27        |



# Weyn-Lauwers N.V.

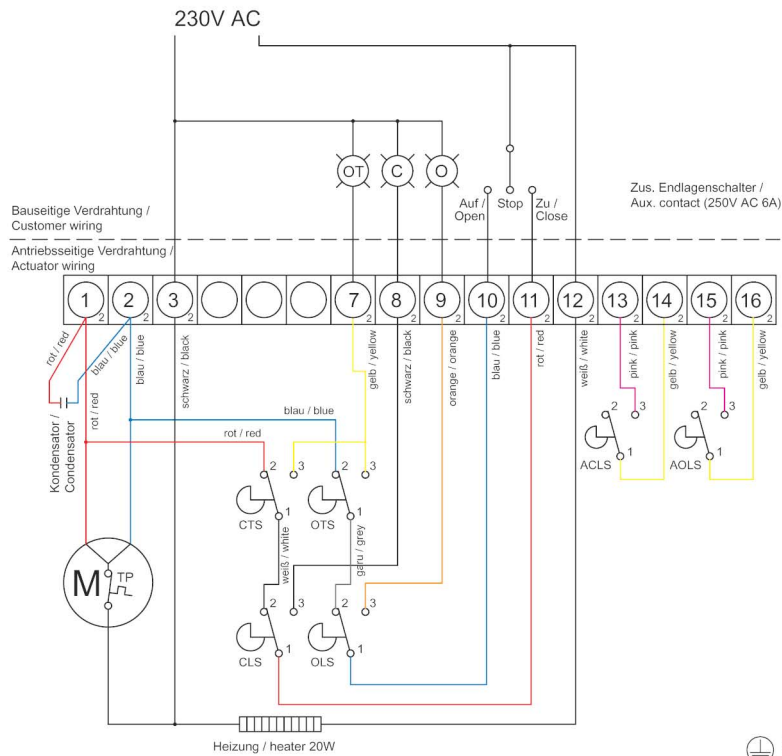
Industriepark-Noord 12  
B - 9100 SINT-NIKLAAS

Tel. : 00 32 (0)3 776.34.13  
Fax : 00 32 (0)3 778.09.52  
weynlauwers@weynlauwers.be  
www.weynlauwers.be

## MOTOR NA 15 - NA250 230VAC

CLS: Endlagenschalter 'ZU' / limit switch 'CLOSE' (250V AC 6A)  
OLS: Endlagenschalter 'AUF' / limit switch 'OPEN' (250V AC 6A)  
CTS: Drehmomentschalter 'ZU' / torque switch 'CLOSE' (250V AC 6A)  
OTS: Drehmomentschalter 'AUF' / torque switch 'OPEN' (250V AC 6A)  
ACLS: Zus. Endlagenschalter 'ZU' / aux. limit switch 'CLOSE' (250V AC 6A)  
AOLS: Zus. Endlagenschalter 'AUF' / aux. limit switch 'OPEN' (250V AC 6A)  
TP: Thermischer Schutzschalter / thermal protector (250V AC 15A)

OT: Kontrollleuchte 'Überlastung' / Over torque lamp  
C: Kontrollleuchte 'Auf' / Close lamp  
O: Kontrollleuchte 'Zu' / Open lamp





# Weyn-Lauwers N.V.

Industriepark-Noord 12  
B - 9100 SINT-NIKLAAS

Tel. : 00 32 (0)3 776.34.13  
Fax : 00 32 (0)3 778.09.52  
weynlauwers@weynlauwers.be  
www.weynlauwers.be

## MOTOR NA 15 - NA28 24VDC

- CLS: Endlagenschalter 'ZU' / limit switch 'CLOSE' (250V AC 6A)
- OLS: Endlagenschalter 'AUF' / limit switch 'OPEN' (250V AC 6A)
- ACLS: Zus. Endlagenschalter 'ZU' / aux. limit switch 'CLOSE' (250V AC 6A)
- AOLS: Zus. Endlagenschalter 'AUF' / aux. limit switch 'OPEN' (250V AC 6A)
- CTS: Drehmomentschalter 'ZU' / torque switch 'CLOSE' (250V AC 6A)
- OTS: Drehmomentschalter 'AUF' / torque switch 'OPEN' (250V AC 6A)
- TP: Thermischer Schutzschalter / thermal protector (250V AC 15A)
- C: Kontrolleuchte 'Auf' / Close lamp
- O: Kontrolleuchte 'Zu' / Open lamp
- OT: Kontrolleuchte 'Drehmomentschalter' / Over torque lamp

Betrieb nur über Polwendeschütz.  
Antrieb nicht dauerhaft bestromen.  
Operation only with pole-changing  
contactor. No permanently energizing.

SCHALTCHRANK / CONTROL CABINET

ANTRIEB / ACTUATOR

Bauseitige Verdrahtung /  
Customer wiring

Antriebsseitige Verdrahtung /  
Actuator wiring

