



Weyn-Lauwers N.V.

INDUSTRIEPARK-NOORD 12
B - 9100 SINT-NIKLAAS

TEL. 0032 (0)3 776.34.13
FAX. 0032 (0)3 778.09.52

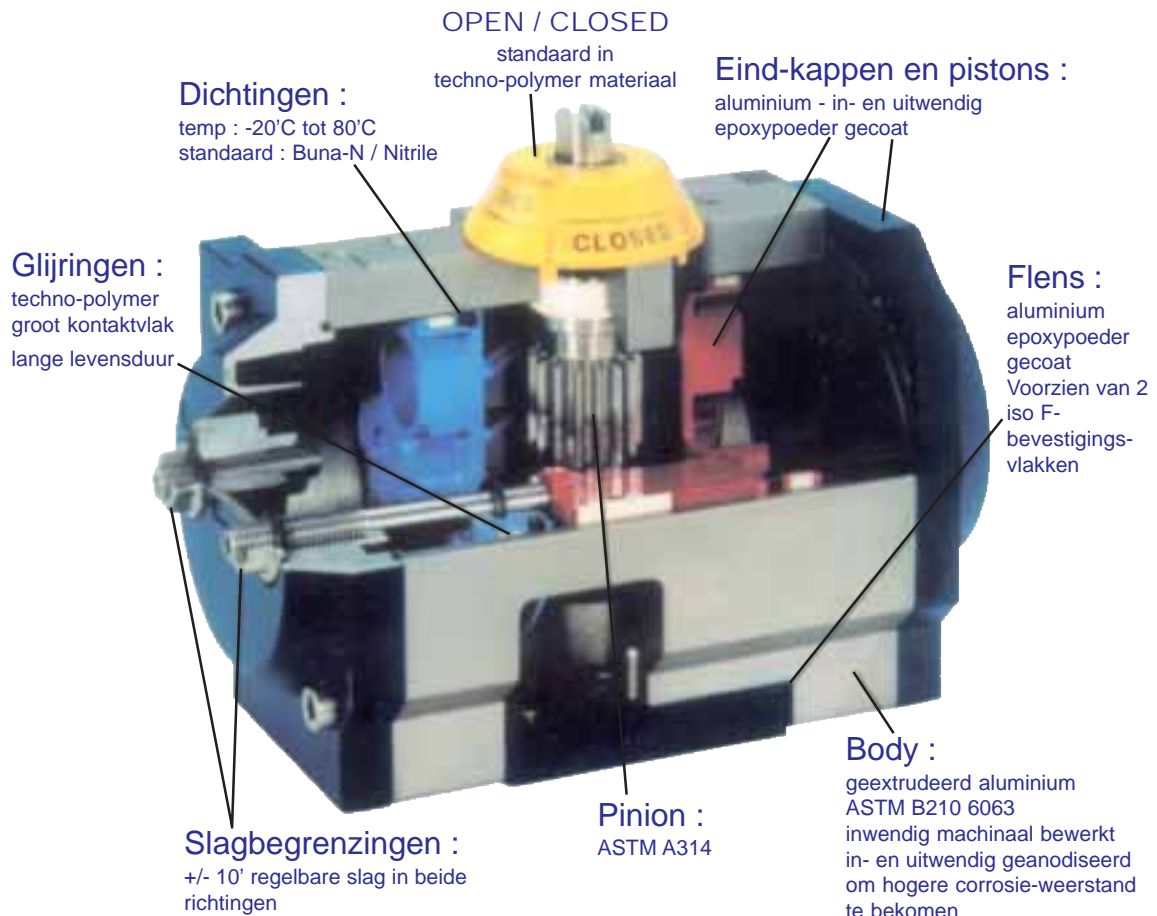
weynlauwers@weynlauwers.be
www.weynlauwers.be

PNEUMATISCHE
BEDIENING
MAX-AIR
UT - UTS

MAX-AIR pneumaten

kenmerken

- zelfde constructie voor dubbel- en enkelwerkend
 - NAMUR VDI/VDE 3845 en ISO 5211
 - slagbegrenzing +/- 10' in beide richtingen
 - open/close aanduiding standaard aanwezig
 - lange levensduur, onderhoudsvrij
 - opbouwmogelijkheid van eindschakelaars, ...
-
- stuurdruk : 1 - 10 bar
 - stuurmedium : lucht, water, hydraulische olie
-
- dubbel ISO 5211 bevestigingsvlak





Weyn-Lauwers N.V.

INDUSTRIEPARK-NOORD 12
B - 9100 SINT-NIKLAAS

TEL. 0032 (0)3 776.34.13
FAX. 0032 (0)3 778.09.52

weynlauwers@weynlauwers.be
www.weynlauwers.be

PNEUMATISCHE BEDIENING Draaimomenten - Fig. UT/UTS

DRAAIMOMENT IN Nm

Dubbelwerkende pneumatische bediening fig. UT

Druk Type	2	3	4	5	6	7	8	9	10
UT-10	5,0	7,6	10,1	12,6	15,1	17,6	20,2		
UT-15	11,0	16,5	22,0	27,5	33,0	38,5	44,0	49,5	55,0
UT-20	20,0	30,0	40,0	50,0	60,0	70,0	80,0	90,0	100,0
UT-25	30,2	45,3	60,4	75,5	90,6	105,7	120,8	135,9	151,0
UT-30	40,0	60,3	80,4	100,5	120,6	140,7	160,8	180,9	201,0
UT-35	64,4	96,6	128,8	161,1	193,3	225,5	257,7	289,9	322,1
UT-40	80,6	120,9	161,2	201,5	241,8	282,2	322,5	362,8	403,1
UT-45	125,8	188,7	251,6	314,5	377,4	440,3	503,2	566,1	629,0
UT-55	241,6	362,3	483,1	603,9	724,7	845,5	966,3	1087,1	1207,8
UT-65	483,2	724,8	966,4	1208,0	1449,6	1691,2	1932,8	2174,4	2416,0

Enkelwerkende pneumatische bediening fig. UTS

Type	N°	Veermoment		Druk									
				3 bar		4 bar		5 bar		6 bar		7 bar	
		0°	90°	0°	90°	0°	90°	0°	90°	0°	90°	0°	90°
UT-10S	2	7,4	5,0	2,6	0,2	5,1	2,7	7,6	5,2	10,1	7,7	12,6	10,2
UT-15S	4	16,9	12,1			9,9	5,1	15,4	10,6	20,9	16,1	26,4	21,6
UT-20S	4	27,7	20,8	9,2	2,3	19,2	12,3	29,2	22,3	39,2	32,3	49,2	42,3
UT-25S	5	48,6	34,9			25,5	11,8	40,6	26,9	55,7	42,0	70,8	57,1
UT-30S	5	70,7	52,7			27,7	9,7	47,8	29,8	67,9	49,9	88,0	70,0
UT-35S	3	69,7	52,0	44,6	26,9	76,8	59,1	109,1	91,4	141,3	123,6	173,5	155,8
UT-40S	4	114,1	83,7	37,2	6,8	77,5	47,1	117,8	87,4	158,1	127,7	198,5	168,1
UT-45S	4	200,8	126,2			125,4	50,8	188,3	113,7	251,2	176,6	314,1	239,5
UT-55S	5	419,7	297,8			185,3	63,4	306,1	184,2	426,8	305,0	547,7	425,8



Weyn-Lauwers N.V.

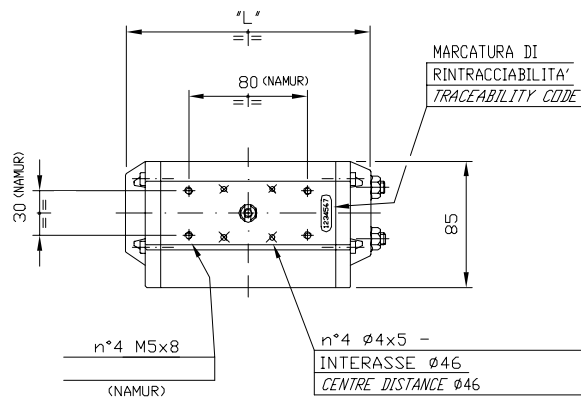
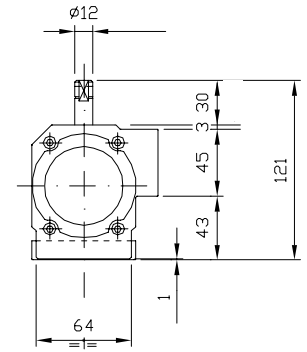
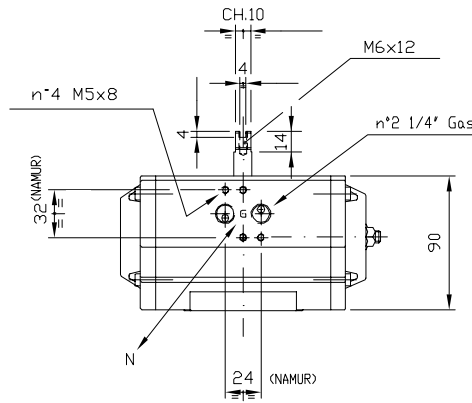
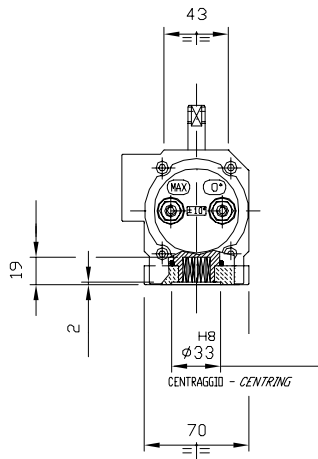
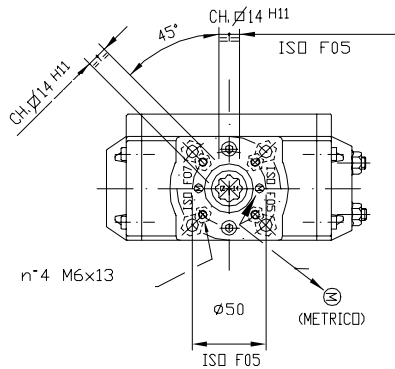
INDUSTRIEPARK-NOORD 12
B - 9100 SINT-NIKLAAS

TEL. 0032 (0)3 776.34.13
FAX. 0032 (0)3 778.09.52

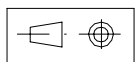
weynlauwers@weynlauwers.be
www.weynlauwers.be

afmetingen
Max-Air
UT15

CORRISPONDENTE ALLE NORME
ISO 5211 - DIN 3337
E NAMUR VDI / VDE 3845



	90°
"L"	165



DIMENSIONI IN mm.



Weyn-Lauwers N.V.

INDUSTRIEPARK-NOORD 12
B - 9100 SINT-NIKLAAS

TEL. 0032 (0)3 776.34.13
FAX. 0032 (0)3 778.09.52

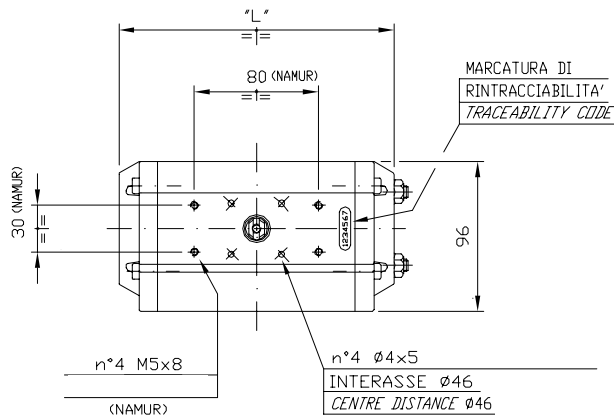
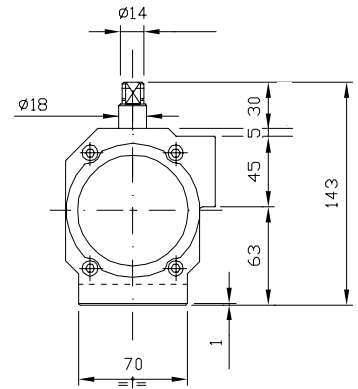
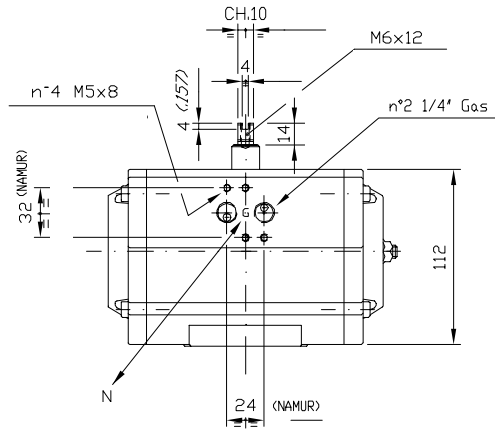
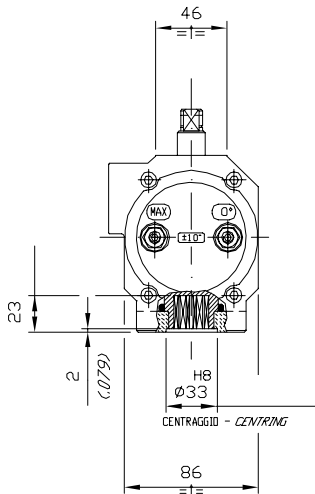
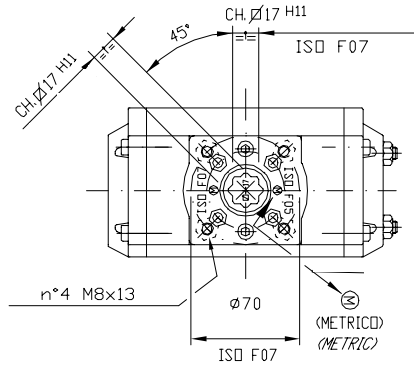
weynlauwers@weynlauwers.be
www.weynlauwers.be

afmetingen
Max-Air
UT20

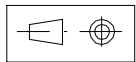
CORRISPONDENTE ALLE NORME

ISO 5211 - DIN 3337

E NAMUR VDI / VDE 3845



	90°
"L"	177



DIMENSIONI IN mm.



Weyn-Lauwers N.V.

INDUSTRIEPARK-NOORD 12
B - 9100 SINT-NIKLAAS

TEL. 0032 (0)3 776.34.13
FAX. 0032 (0)3 778.09.52

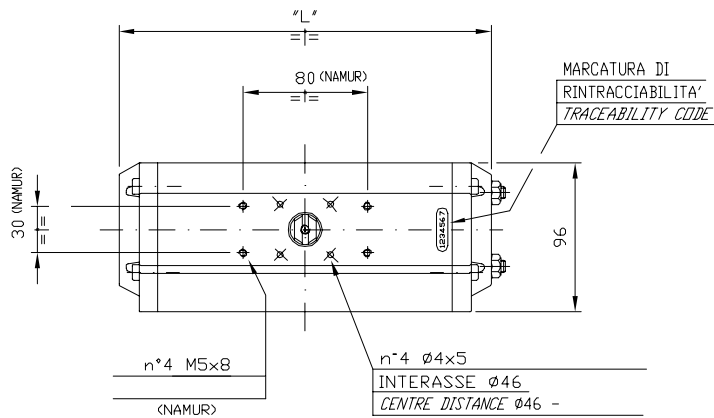
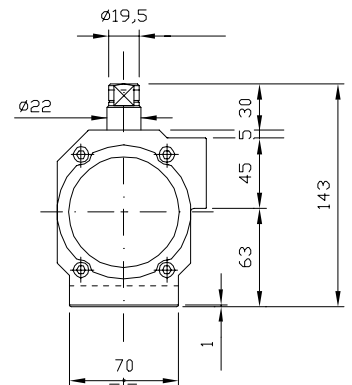
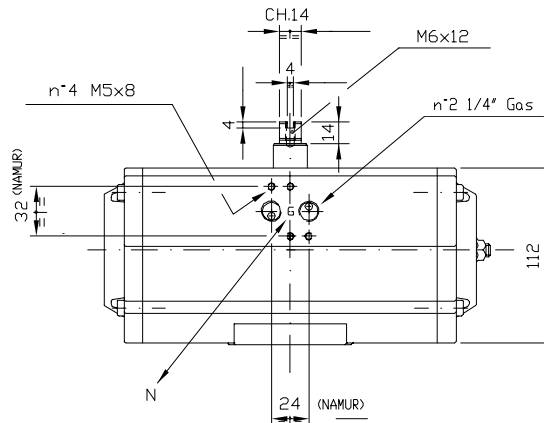
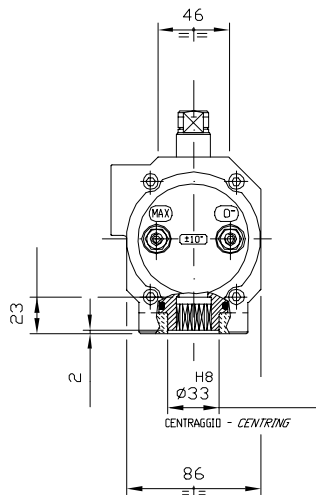
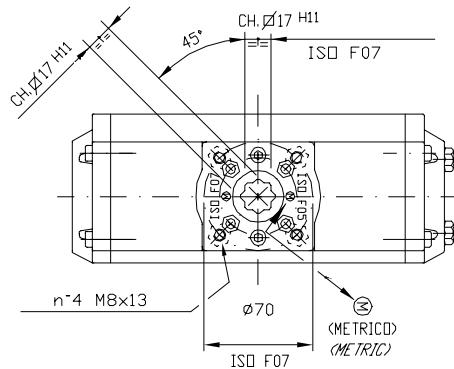
weynlauwers@weynlauwers.be
www.weynlauwers.be

afmetingen
Max-Air
UT25

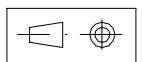
CORRISPONDENTE ALLE NORME

ISO 5211 - DIN 3337

E NAMUR VDI / VDE 3845



"L"	90°
	239



DIMENSIONI IN mm.



Weyn-Lauwers N.V.

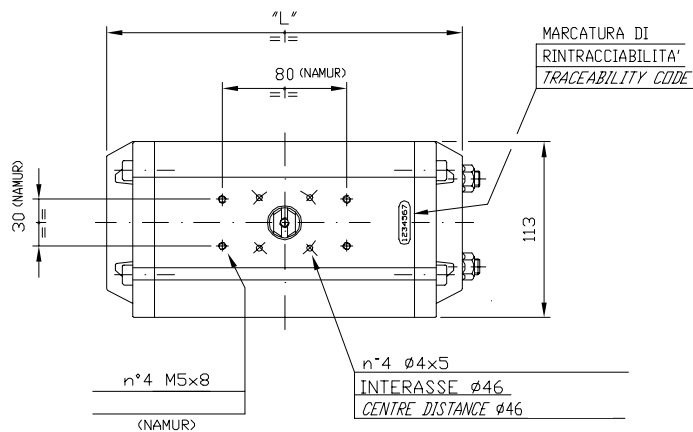
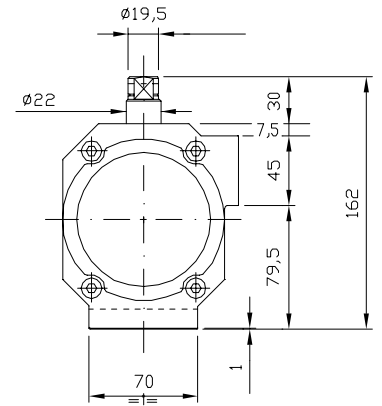
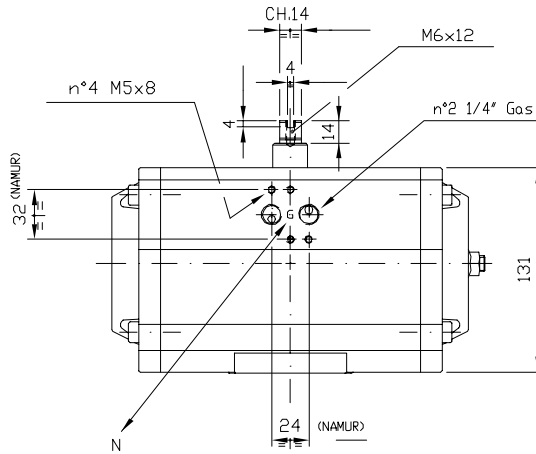
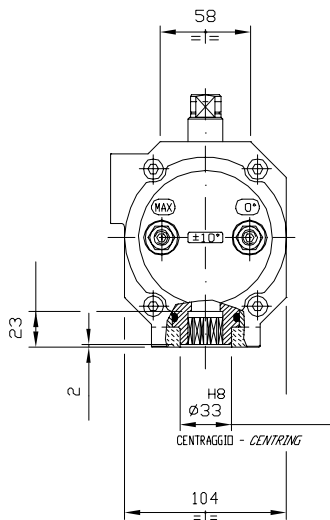
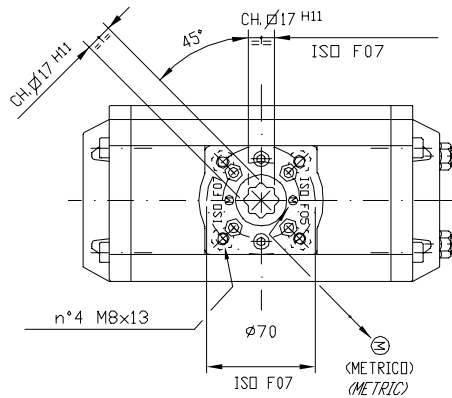
INDUSTRIEPARK-NOORD 12
B - 9100 SINT-NIKLAAS

TEL. 0032 (0)3 776.34.13
FAX. 0032 (0)3 778.09.52

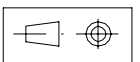
weynlauwers@weynlauwers.be
www.weynlauwers.be

afmetingen
Max-Air
UT30

CORRISPONDENTE ALLE NORME
ISO 5211 - DIN 3337
E NAMUR VDI / VDE 3845



"L"	90°
	230



DIMENSIONI IN mm.



Weyn-Lauwers N.V.

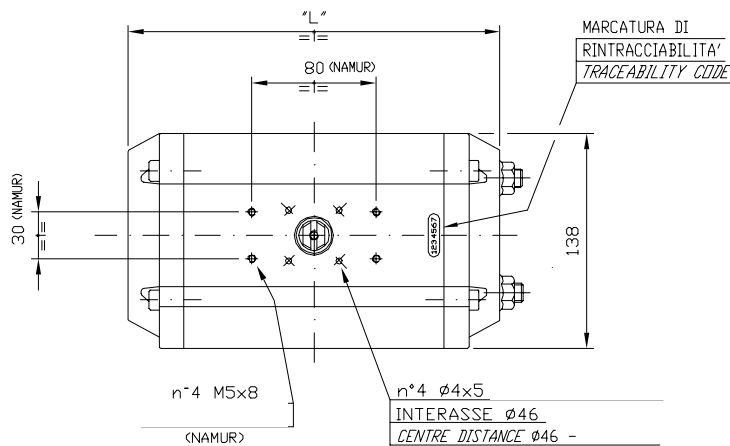
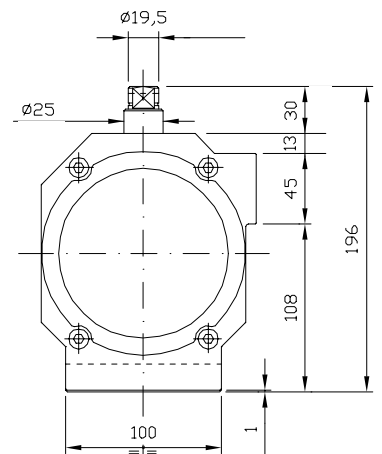
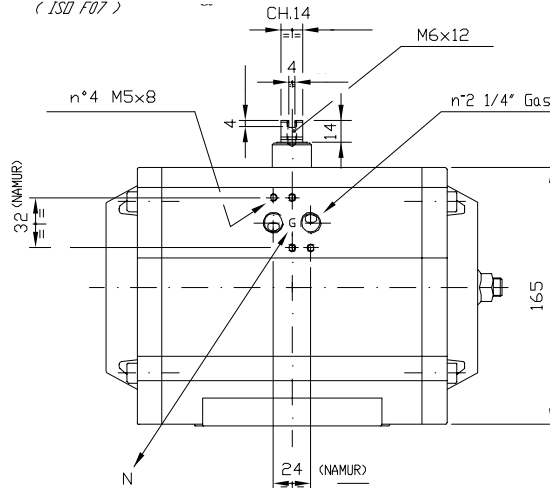
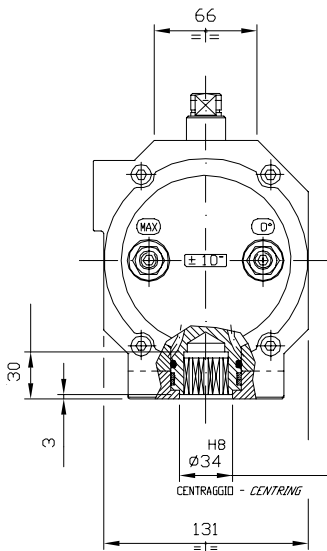
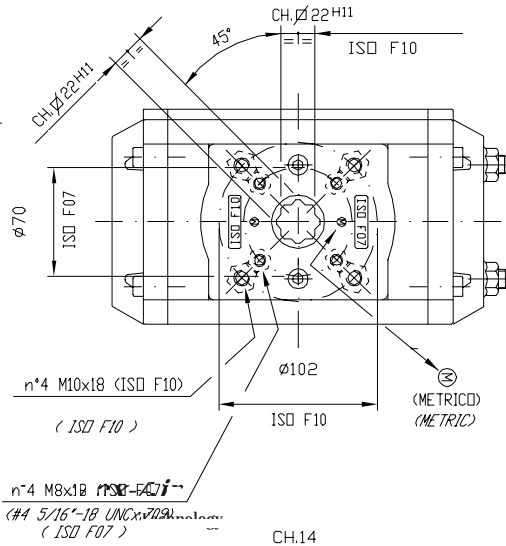
INDUSTRIEPARK-NOORD 12
B - 9100 SINT-NIKLAAS

TEL. 0032 (0)3 776.34.13
FAX. 0032 (0)3 778.09.52

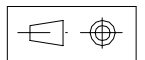
weynlauwers@weynlauwers.be
www.weynlauwers.be

afmetingen
Max-Air
UT35

CORRISPONDENTE ALLE NORME
ISO 5211 - DIN 3337
E NAMUR VDI / VDE 3845



"L"	90°
	246



DIMENSIONI IN mm.



Weyn-Lauwers N.V.

INDUSTRIEPARK-NOORD 12
B - 9100 SINT-NIKLAAS

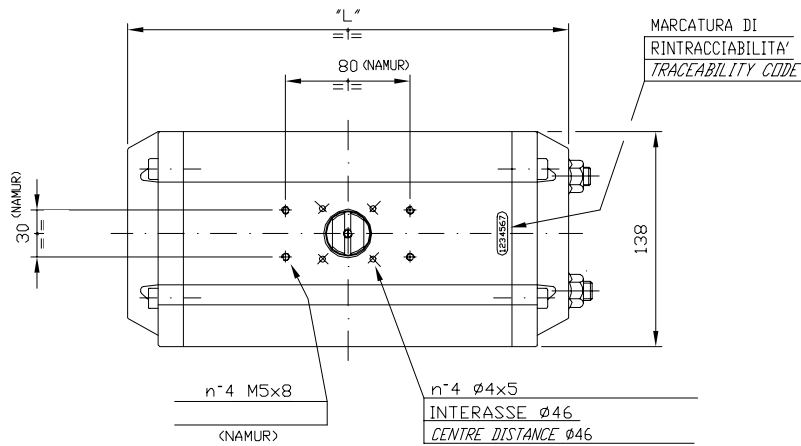
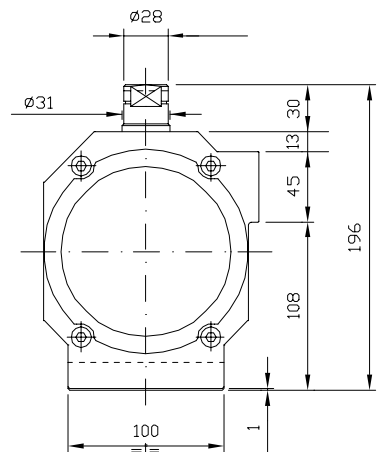
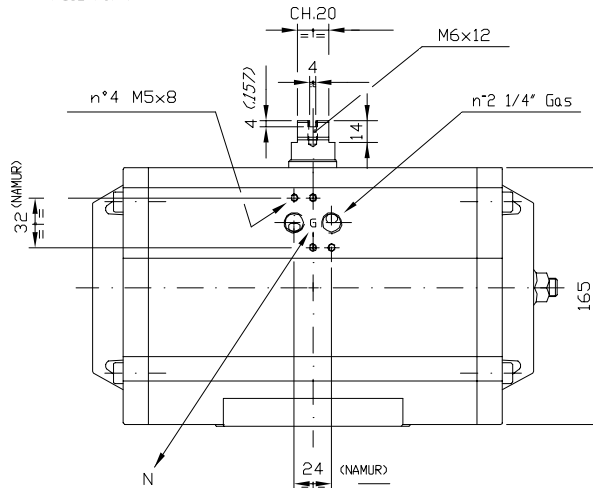
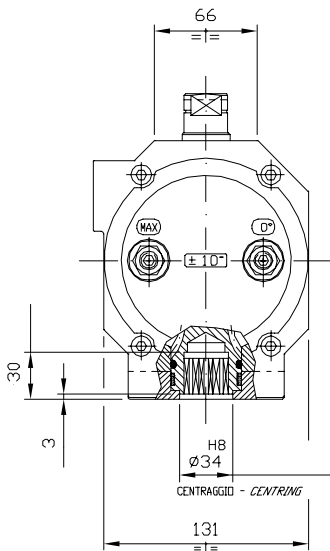
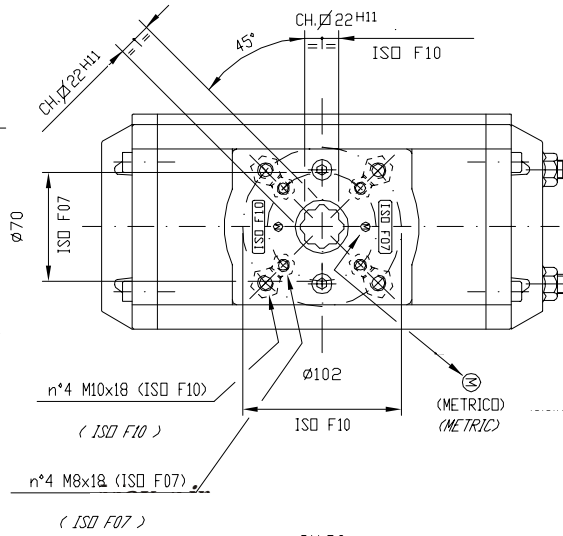
TEL. 0032 (0)3 776.34.13
FAX. 0032 (0)3 778.09.52

weynlauwers@weynlauwers.be
www.weynlauwers.be

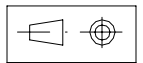
afmetingen Max-Air UT40

CORRISPONDENTE ALLE NORME
ISO 5211 - DIN 3337
E NAMUR VDI / VDE 3845

DIMENSIONS TO
ISO 5211 - DIN 3337
AND NAMUR VDI / VDE 3845



"L"	90°
	290



DIMENSIONI IN mm.



Weyn-Lauwers N.V.

INDUSTRIEPARK-NOORD 12
B - 9100 SINT-NIKLAAS

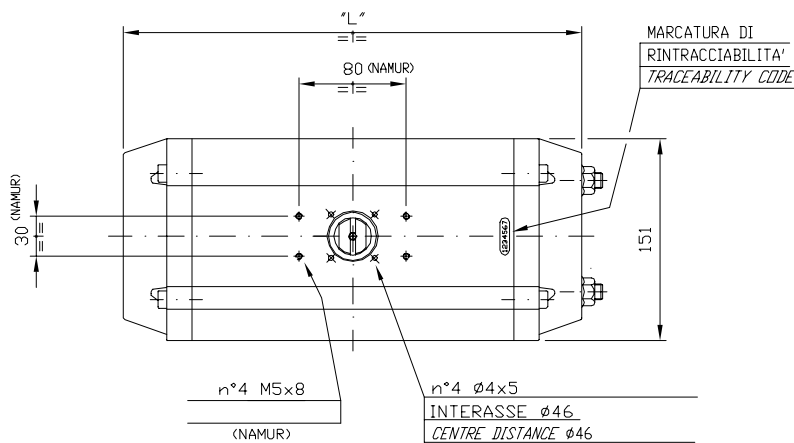
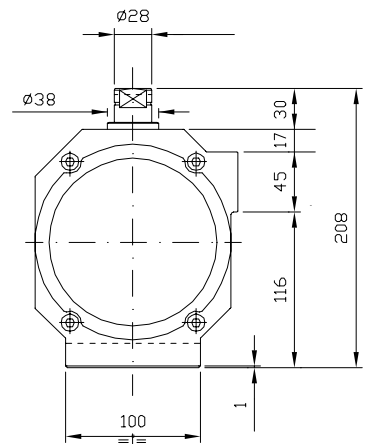
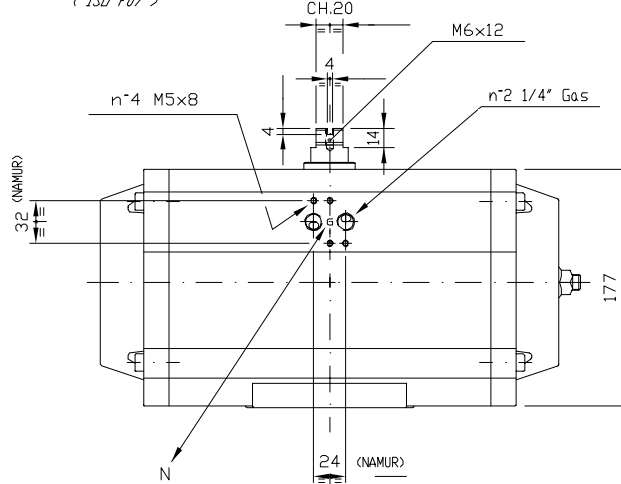
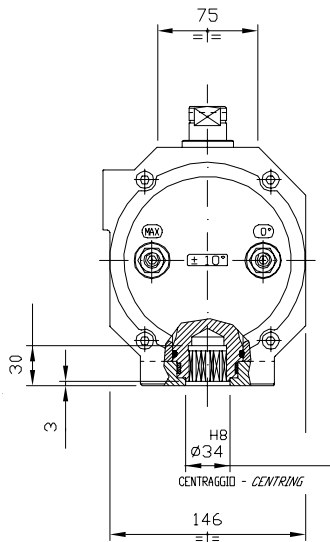
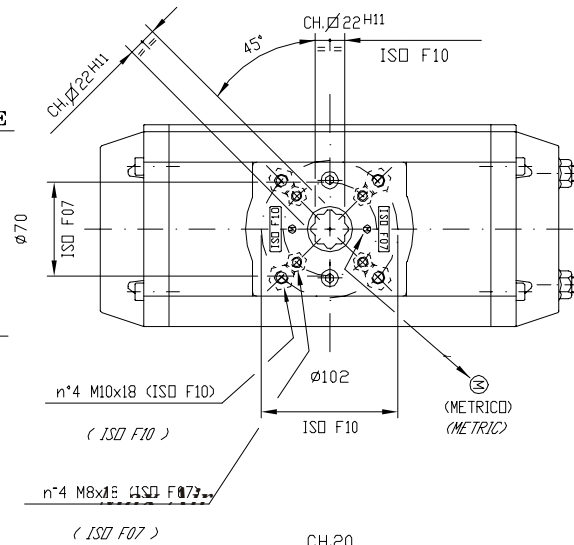
TEL. 0032 (0)3 776.34.13
FAX. 0032 (0)3 778.09.52

weynlauwers@weynlauwers.be
www.weynlauwers.be

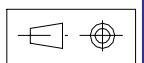
afmetingen
Max-Air
UT45

CORRISPONDENTE ALLE NORME
ISO 5211 - DIN 3337
E NAMUR VDI / VDE 3845

DIMENSIONS TO
ISO 5211 - DIN 3337
AND NAMUR VDI / VDE 3845



"L"	90°
	351



DIMENSIONI IN mm.



Weyn-Lauwers N.V.

INDUSTRIEPARK-NOORD 12
B - 9100 SINT-NIKLAAS

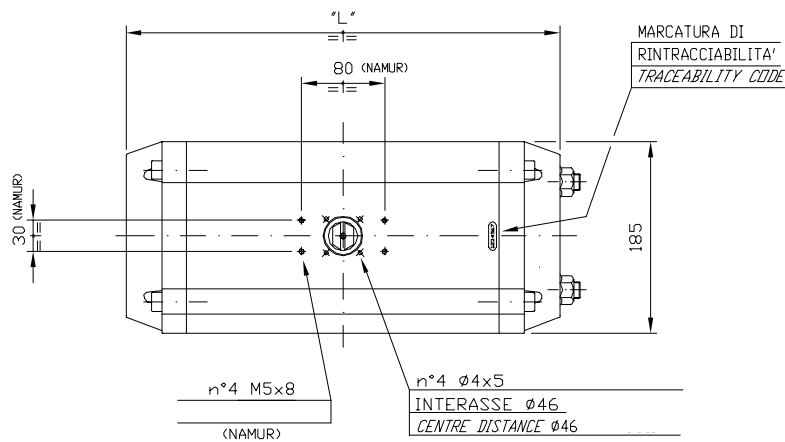
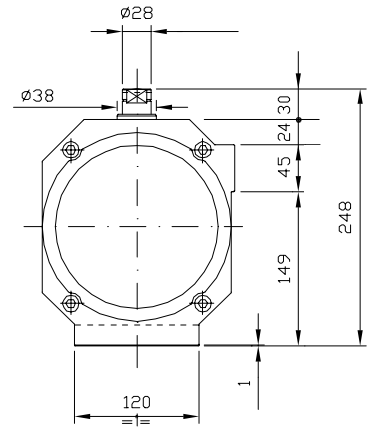
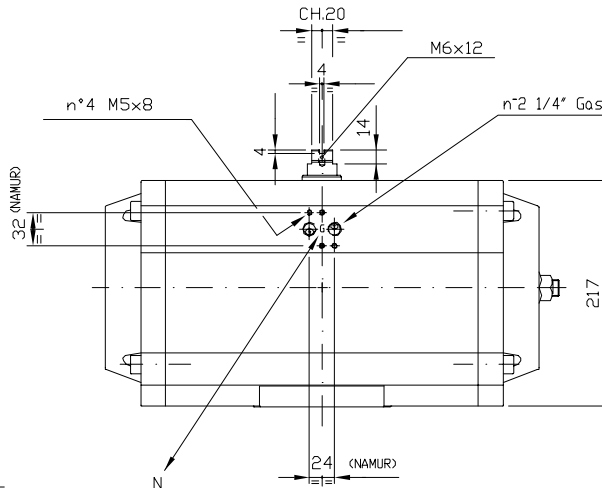
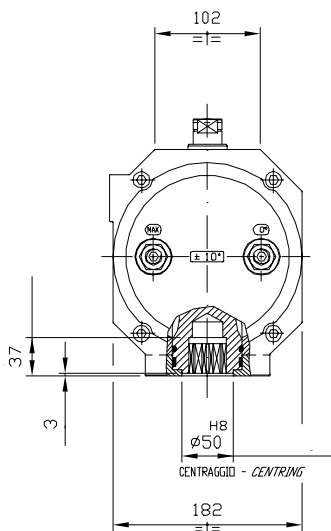
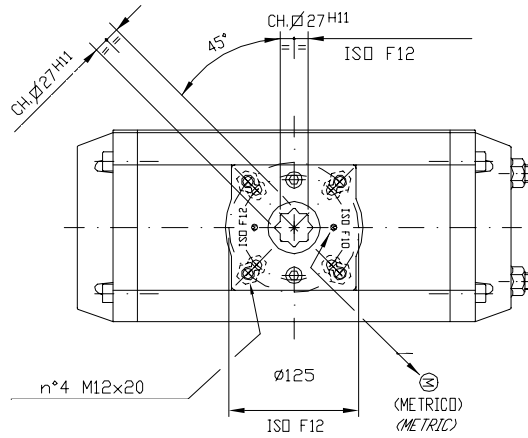
TEL. 0032 (0)3 776.34.13
FAX. 0032 (0)3 778.09.52

weynlauwers@weynlauwers.be
www.weynlauwers.be

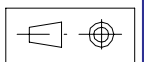
afmetingen
Max-Air
UT55

CORRISPONDENTE ALLE NORME
ISO 5211 - DIN 3337
E NAMUR VDI / VDE 3845

DIMENSIONS TO
ISO 5211 - DIN 3337
AND NAMUR VDI / VDE 3845



	90°
"L"	418



DIMENSIONI IN mm.



Weyn-Lauwers N.V.

INDUSTRIEPARK-NOORD 12
B - 9100 SINT-NIKLAAS

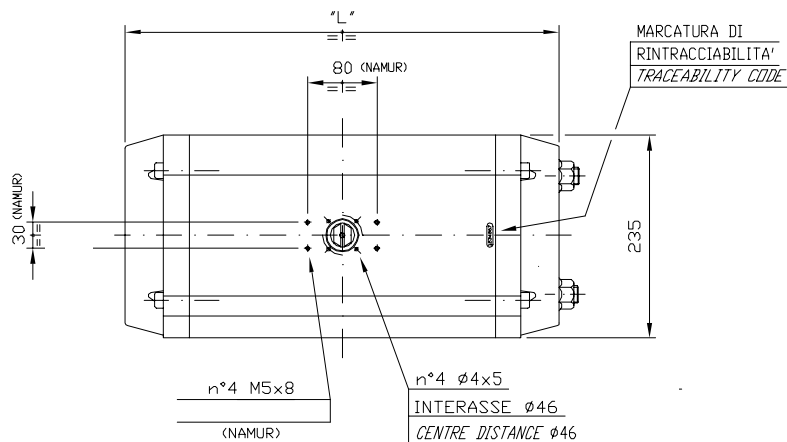
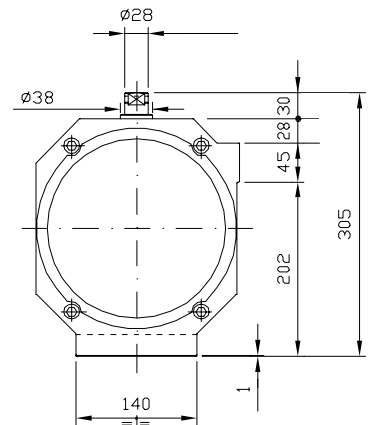
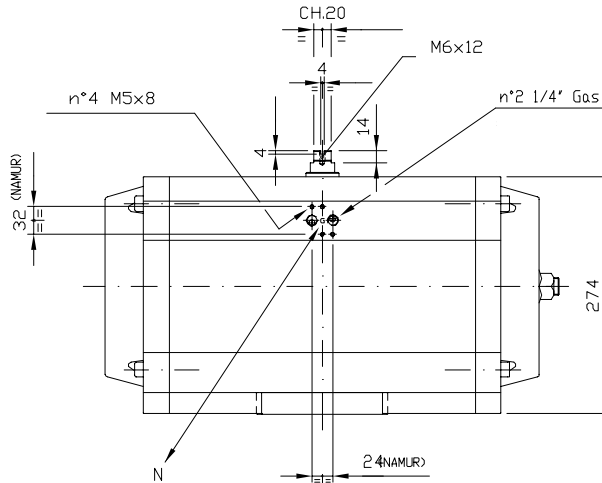
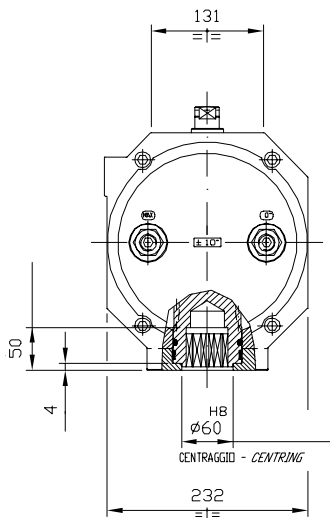
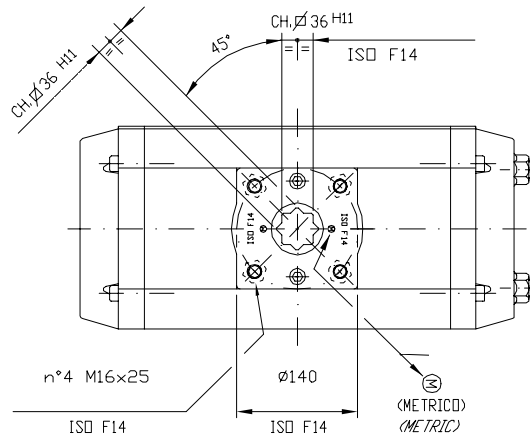
TEL. 0032 (0)3 776.34.13
FAX. 0032 (0)3 778.09.52

weynlauwers@weynlauwers.be
www.weynlauwers.be

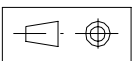
afmetingen
Max-Air
UT65

CORRISPONDENTE ALLE NORME
ISO 5211 - DIN 3337
E NAMUR VDI / VDE 3845

DIMENSIONS TO
ISO 5211 - DIN 3337
AND NAMUR VDI / VDE 3845



90°
502
"L"



DIMENSIONI IN mm.