



Weyn-Lauwers N.V.

INDUSTRIEPARK-NOORD 12
B - 9100 SINT-NIKLAAS

TEL. 0032 (0)3 776.34.13
FAX. 0032 (0)3 778.09.52

weynlauwers@weynlauwers.be
www.weynlauwers.be

BALL VALVE

AISI 316 - PN 16/40

2-pc - fire-safe

fig 173

MAIN STANDARD FEATURES

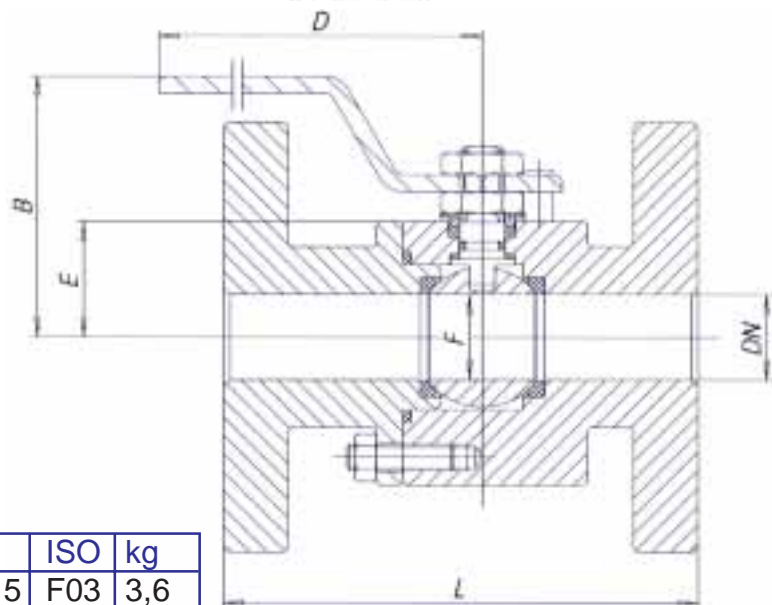
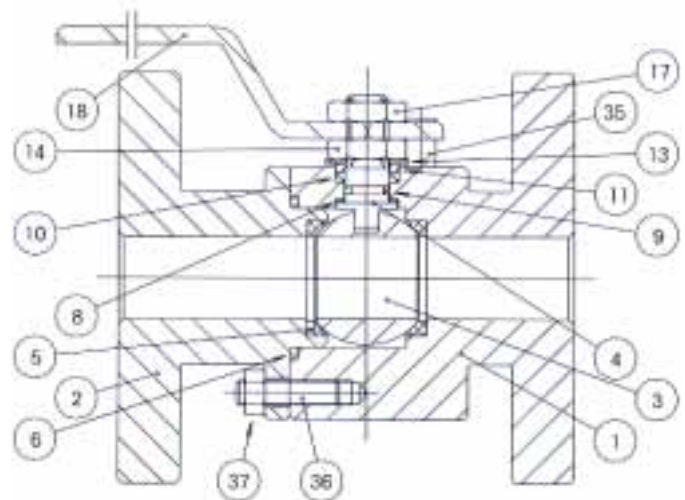
- 2-pc / full bore / acc. BS 5351
- FIRE-SAFE : BS 6755 - API 6 FA - API 607
- blow-out proof stem / Anti-static device
- pressure dn 15 - dn 50 : PN16/40
dn 65 - dn 200 :PN16
- temp : -20 +180°C
- DIN 3202 face to face F4
- DVGW GAS APPROVED
- triple stem-packing with labyrinth-effect

SPECIAL EXECUTIONS

- 15 % GLASS-FILLED PTFE or cavity-free
- face to face F1
- ANSI 150 - 300 lbs

MATERIALS

1	body	AISI 316
2	body flange	AISI 316
3	ball	AISI 316
4	stem	AISI 316
5	seat	PTFE
6	flange seal	PTFE
8	stem seal	PTFE
9	stem O-ring	viton
10	upper seal	PTFE
11	packing gland	AISI 316
13	belleville wash.	AISI 304
14	retaining nut	AISI 304
17	locking nut	AISI 304
18	lever handle	CS galv
35	stop pin	AISI 304
36	stud bolt	A 193 B8
37	nut	A 194 8A



DIMENSIONS in mm

size	ref	B	D	E	F	L	ISO	kg
dn 15		66	140	34	15	115	F03	3,6
dn 20		69	150	54	20	120	F03	4,7
dn 25		82	180	39	25	125	F04	5,8
dn 32		87	180	46	32	130	F04	8,4
dn 40		108	230	57	40	140	F05	11,2
dn 50		115	230	65	50	150	F05	14,9
dn 65		139	320	80	65	170	F07	23,8
dn 80		150	320	91	78	180	F07	28,6
dn 100		163	370	121	96	190	F10	35,6

