

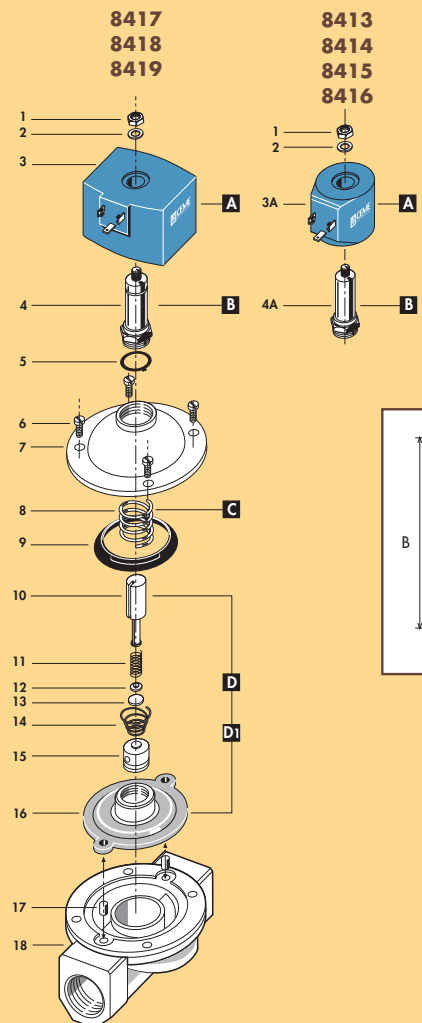


Weyn-Lauwers N.V.

Industriepark-Noord 12
B - 9100 SINT-NIKLAAS

Tel. : 00 32 (0)3 776.34.13
Fax : 00 32 (0)3 778.09.52
weynlauwers@weynlauwers.be
www.weynlauwers.be

SOLENOID VALVES VSO 84



1 Dado	Lock nut	Mutter
2 Rondella	Washer	Beilagscheibe
3 Bobina	Coil	Magnetspule
4 Cannelotto	Tube guide	Plungerrohr
5 O-ring	O-ring	O-ring
6 Vite	Screw	Schraube
7 Coperchio	Valve body top	Deckel
8 Molla	Spring	Feder
9 Anello	Ring	Ring
10 Nucleo mobile	Plunger	Plunger
11 Molla	Spring	Feder
12 Piattello	Support	Scheibe
13 Pastiglia	Seal	Dichtung
14 Molla	Spring	Feder
15 Bussola	Bush	Buchse
16 Membrana	Diaphragm	Membrane
17 Bussola	Bush	Buchse
18 Corpo	Valve body base	Grundkörper

RICAMBI	SPARE PARTS	ERSATZTEILE
A Bobina	Coil	Magnetspule
B Cannelotto	Tube guide	Plungerrohr
C Molla	Spring	Feder
D Gruppo membrana (CA.)	Diaphragm unit (A.C.)	Membrane Aggregat (A.C.)
D1 Gruppo membrana (CC.)	Diaphragm unit (D.C.)	Membrane Aggregat (D.C.)

CARATTERISTICHE SPECIFICATIONS

ATTACCHI PIPES in → out	Ø mm	CODICE CODE	KV m ³ /h	M.O.P.D. bar		DIMENSIONI/DIMENSIONS mm				PESO/WEIGHT Kg
				AC	DC	A	B	C	D	
G 3/8	12	8413	2.20	5	5	61	105	48	92	0.680
G 1/2	12	8414	2.20	5	5	61	105	48	92	0.660
G 3/4	20	8415	5.50	4	2	100	110	80	93	1.100
G 1	25	8416	7.50	4	2	100	116	80	96	1.200
G 1 1/4	36	8417	17.50	4	2	146	200	128	170	5.200
G 1 1/2	39	8418	19.00	4	2	146	200	128	170	5.000
G 2	51	8419	32.40	4	2	174	216	146	180	6.500
3/8 NPT	12	8423	2.20	5	5	61	105	48	92	0.680
1/2 NPT	12	8424	2.20	5	5	69	105	48	92	0.670

CARATTERISTICHE ELETTRICHE ELECTRICAL INFORMATION

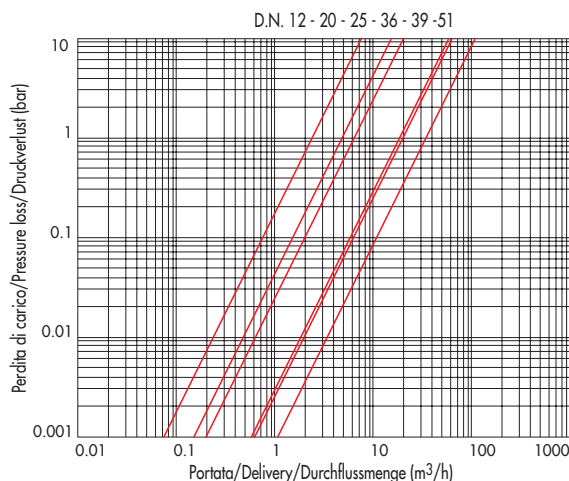
		POTENZA/POWER			
		8413-14-15-16		8417-18-19	
		NOMINALE HOLDING	SPUNTO IN RUSH	NOMINALE HOLDING	SPUNTO IN RUSH
V~	12 24 48 110 230 400	50	60	18VA	47VA
V=	12 24 48 110	21W		43W	

Per dettagli costruttivi sulle bobine vedi capitolo "INFORMAZIONI DI PROGETTO"
For construction details of the coils see chapter "PROJECT INFORMATION"
Ausführliche Daten über die Ventilspulnen finden Sie unter Abschnitt "TECHNISCHE
INFORMATIONEN"

MAX TEMPERATURA MAX TEMPERATURE

FLUIDI/FLUIDS				AMBIENTE/AMBIENT
NBR	EPDM	EPDM-KTW	FPM	
130°C	130°C	150°C	90°C	80°C

DIAGRAMMA PERDITA DI CARICO PRESSURE LOSS DIAGRAM



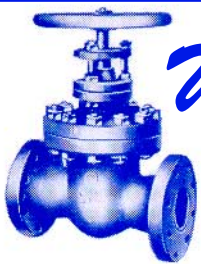
8413
8414
8415
8416
8423
8424



8417
8418
8419



serie 84



Weyn-Lauwers N.V.

Industriepark-Noord 12
B - 9100 SINT-NIKLAAS

Tel. : 00 32 (0)3 776.34.13
Fax : 00 32 (0)3 778.09.52
weynlauwers@weynlauwers.be
www.weynlauwers.be

SOLENOID VALVES VSO 84

ELETTROVALVOLA SERVOASSISTITA 2/2 VIE N.C. SOLENOID VALVE SERVO-ACTUATED 2/2 WAY N.C. ZWANGSGESTEUERTES MAGNETVENTIL 2/2 WEGE S.G.



I CARATTERISTICHE GENERALI

PRESSIONE MINIMA DIFFERENZIALE DI FUNZIONAMENTO 0 bar
PARTI A CONTATTO CON IL FLUIDO

TENUTA

NBR a richiesta FPM - EPDM
EPDM-KTW tenuta adatta e certificata DVGW per l'intercettazione di acqua potabile.

CORPO

OTTONE

ORGANI INTERNI

ACCIAIO INOX

FLUIDI

ACQUA - ARIA - OLII LEGGERI

VALVOLA UNIDIREZIONALE

VALVOLA ISPEZIONABILE

VALVOLA FORNITA CON

POSIZIONE DI MONTAGGIO

CONNETTORE TRIPOLARE UNI ISO 4400 (DIN 43650A) - IP65.

Si consiglia di montare la valvola con la bobina rivolta verso l'alto. I modelli 8417, 8418, 8419 devono essere installati in posizione orizzontale con bobina rivolta verso l'alto. 80°C, in D.C. per temperature superiori a 40°C, le performance (M.O.P.D.) potrebbero diminuire.

TEMPERATURA AMBIENTE

80°C, in D.C. per temperature superiori a 40°C, le performance (M.O.P.D.) potrebbero diminuire.

ESECUZIONI SPECIALI

- VERSIONE ANTI COLPO D'ARIE CON TEMPO DI CHIUSURA + PIU' LENTO.
- PER I MODELLI 8415 e 8416 E' DISPONIBILE LA BOBINA B20 (30 W) PER AUMENTARE LA PRESTAZIONE IN D.C. (M.O.P.D.) A 4 BAR.
- VERSIONE CON OMOLOGAZIONE KTW.

UK GENERAL FEATURES

MINIMUM DIFFERENTIAL WORKING PRESSURE: 0 bar
PARTS IN CONTACT WITH THE FLUID

SEALING

NBR on request FPM - EPDM
EPDM-KTW sealing approved and DVGW certified for interception of potable water

BODY

BRASS

INTERNAL PARTS

STAINLESS STEEL

FLUIDS

WATER - AIR - LIGHT OILS

ONE WAY DIRECTION VALVE

SERVICEABLE VALVE

VALVE SUPPLIED WITH

MOUNTING POSITION

THREE POLE PLUG CONNECTOR UNI ISO 4400 (DIN 43650A)-IP65

We advice installation of the valve with the coil vertical. Models 8417,8418,8419 must be mounted in the horizontal position with the coil vertical .

AMBIENT TEMPERATURE

80°C, in D.C. for temperatures higher than 40°C, the performances (M.O.P.D.) could decrease.

SPECIAL EXECUTIONS

- VERSION WITH WATER HAMMER DEVICE FOR SLOWER CLOSING TIME
- FOR MODELS 8415 AND 8416 , COIL TYPE B20 (30 W) IS AVAILABLE TO INCREASE PERFORMANCES (M.O.P.D.) IN D.C. TO 4 BAR.
- VERSION WITH KTW HOMOLOGATION.

D ALLGEMEINE MERKMALE

MINIMALER DIFFERENTIALARBEITSDRUCK 0 bar
MEDIUMS BERGEHRTE TEILE

DICHTUNG

NBR auf Nachfrage FPM - EPDM
EPDM-KTW Dichtung DVGW-KTW zertifiziert fuer den Trinkwassereinsatz.

KOERPER

MESSING

INNERE ELEMENTE

EDELSTAHL

MEDIEN

WASSER - LUFT - LEICHTE OELE

UNIDIREKTIONALES VENTIL

VENTIL WARTUNGSFREUNDLICH

LIEFERUMFANG

MONTAGEPOSITION

DREIPOLIGER STECKER UNI ISO 4400 (DIN 43650A)-IP65

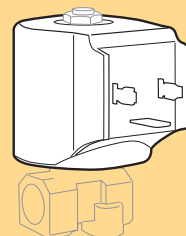
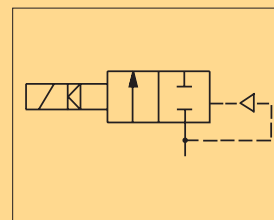
Es wird empfohlen das Ventil mit der Spule senkrecht nach oben einzubauen.

Die Modelle 8417,8418,8419 muessen mit der Spule senkrecht nach oben eingebaut werden. 80°C, im D.C.- Betrieb koennen Temperaturen ueber 40°C, die Schaltkrafte (M.O.P.D.) des Ventils beeintraechtigen.

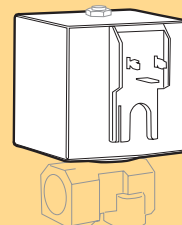
UMGEBUNGSTEMPERATUR

SONDERAUSFUEHRUNGEN

- AUSFUEHRUNG LANGSAM SCHLIESSEND
- FUER DIE MODELLE 8415 UND 8416 IST DIE SPULE B20 (30 W) VERFUEGBAR UM DIE SCHALTKRAEFTE (M.O.P.D.) IN D.C. AUF 4 BAR ZU ERHOEHEN.
- VERSION MIT HOMOLOGATION KTW.



8413-8414-8415-8416-8423-8424
BOBINA TIPO B12
COIL TYPE B12
SPULE TYP B12



8417-8418-8419
BOBINA TIPO B60
COIL TYPE B60
SPULE TYP B60

serie 84